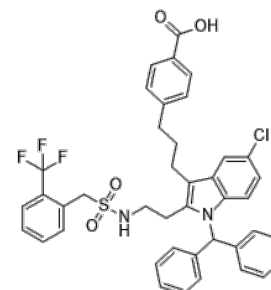


**Product Name** : Giripladib  
**Cat. No.** : PC-22786  
**CAS No.** : 865200-20-0  
**Molecular Formula** : C<sub>41</sub>H<sub>36</sub>ClF<sub>3</sub>N<sub>2</sub>O<sub>4</sub>S  
**Molecular Weight** : 745.25  
**Target** : Phospholipase  
**Solubility** : 10 mM in DMSO



CAS: 865200-20-0

## Biological Activity

Giripladib (PLA-695) is a potent, specific cytoplasmic phospholipase A2 (cPLA2). PLA-695 inhibits radiation induced phosphorylation of ERK and Akt in cultured endothelial cells. PLA-695 in combination with irradiation prevented endothelial cell migration. PLA-695 enhanced radiation induced cell death and attenuated invasion of lung cancer cells. PLA-695 inhibited the formation of new blood vessels and angiogenesis.

## References

- Thotala D, et al. PLoS One. 2013 Jul 19;8(7):e69688.  
Duvernay MT, et al. Biochemistry. 2015 Sep 15;54(36):5578-88.

**Caution: Product has not been fully validated for medical applications. Lab Use Only!**

E-mail: tech@probechem.com